



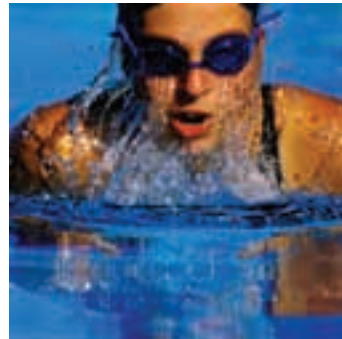
Membership feels great...

- No Joining fee
- No Contract*
- 10 Day Money back Guarantee
- Ability to Freeze
- Fixed price for life

Plus

- Personal Programme
- Isospa Express
- Fixed price for life

*depending on Membership type



Centre Opening Times

Monday - Friday

06.30 - 22.30

Saturday

07.00 - 22.00

Sunday

06.45 - 22.00

Harborough Leisure Centre

Northampton Road, Market Harborough, Leicestershire LE16 9HF

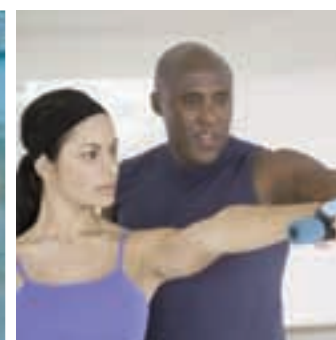
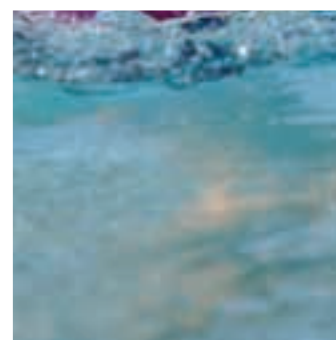
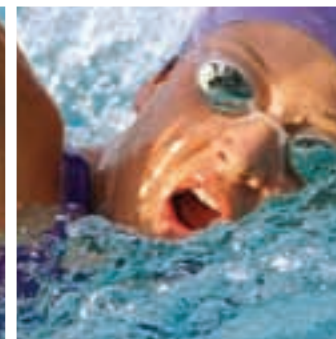
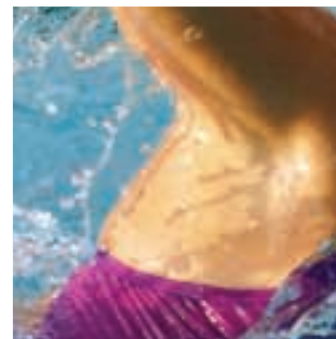
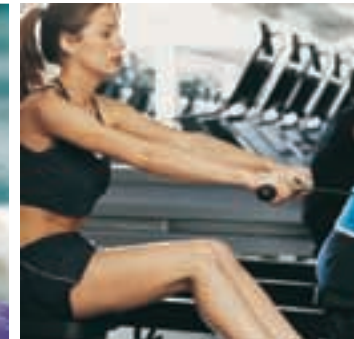
Telephone: 01858 410115

Web: www.harboroughleisurecentre.com



Membership Information

2009



all part of
feeling
great



Membership Benefits

Welcome to Harborough Leisure Centre. See the membership types and prices detailed in this leaflet to find the one that is right for you. Contact Reception or your Customer Advisor for more information.

- Direct Debit Payment Options mean NO Annual Contract;
- No Joining Fee;
- 10 Day Money Back Guarantee
- Ability to Freeze*;
- Use of Lutterworth Sports Centre

*depending on membership type

Full Membership	- Mon – Sun between 6.30am – 22.30pm
Off Peak Single =	- Mon – Fri between 6.30am – 5.30pm and anytime at weekends
20/20 Membership	- Mon – Fri between 6.30 – 5.30pm and 20.00pm – 22.30pm and anytime at weekends
Junior Membership	- Mon – Thurs between 16.00 – 17.30 – Fri between 16.00 – 22.30*** and anytime at weekends***. (Term Time)

Price Comparison

Option 1	Option 2

Memberships

isospa Memberships Include:

Type

Full Membership (monthly)	£34.50*
Full Membership (annually) (Includes Fitness Suite, Swimming Pool, Workout Classes and health Suite*)	£379.50
Off Peak Single (monthly)	£29.50
Off Peak Single (annually) (Includes Fitness Suite, Swimming Pool, Workout Classes)	£324.50
20/20 Membership (monthly)	£20.00
20/20 Membership (annually) (Includes Fitness Suite, Swimming Pool, Workout Classes for 16-19 yr olds)	£220.00
Junior Membership (monthly)	£14.99
Junior Membership (annually) (Includes Fitness Suite, Swimming Pool, Workout Classes for 11-15 yr olds)	£164.89
Family Membership (monthly)	£79.00
Family Membership (annually) (Includes Fitness Suite, Swimming Pool, Workout Classes** and health Suite*)	£869.00

- Joint Memberships are available, please speak to a Customer Advisor for more details
- All Annual Memberships include 1 month free
- Advanced memberships are worked out at 12 months for the price of 11 months
- Family membership based on 2 adults 2 kids
- Concessionary Memberships are available, please speak to a Customer Advisor for more details

*Only applicable at Harborough

**Specific to certain class availability for ages

*** Only with responsible adult user present



Memberships Include:

Single Membership (monthly) (Includes Swimming Pool)	£18.20
Single Membership (annually)	£200.20
Junior/Concession Membership (monthly) (Includes Swimming Pool)	£12.30
Junior/Concession Membership (annually)	£135.50
Family Membership (monthly) (Includes Swimming Pool)	£49.00
Family Membership (annually)	£539.00