



# Membership feels great...

- No Joining fee
- No Contract
- 10 Day Money back Guarantee
- Ability to Freeze\*
- Fixed price for life\*

## Plus

- Personal Programme
- Fixed price for life

\*depending on Membership type



### Centre Opening Times

Monday - Friday

06.30 - 22.30

Saturday

07.00 - 22.00

Sunday

06.45 - 22.00



Harborough Leisure Centre

Northampton Road, Market Harborough, Leicestershire LE16 9HF

Telephone: 01858 412057 - Customer Advisor

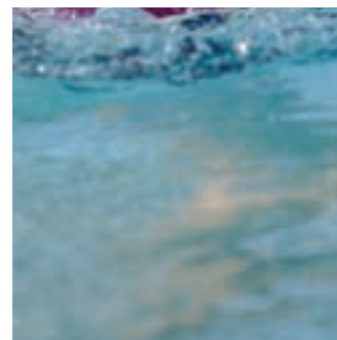
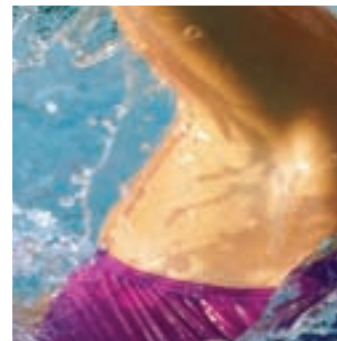
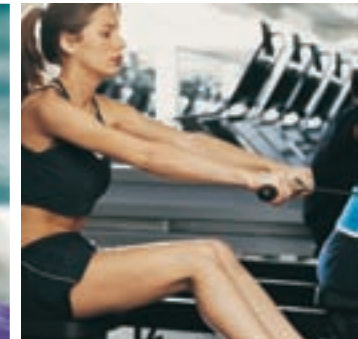
01858 410115 - Reception

Web: [www.harboroughleisurecentre.com](http://www.harboroughleisurecentre.com)



## Membership Information

2010



## Membership Benefits

Welcome to Harborough Leisure Centre. See the membership types and prices detailed in this leaflet to find the one that is right for you. Contact Reception or your Customer Advisor for more information.

- Direct Debit Payment Options mean NO Annual Contract;
- No Joining Fee;
- 10 Day Money Back Guarantee
- Ability to Freeze\*;
- Use of Lutterworth Sports Centre

\*depending on membership type

Full Membership/Full Plus	- Mon – Sun between 6.30am – 22.30pm
Off Peak Single	- Mon – Fri between 6.30am – 5.30pm and anytime at weekends
20/20 Membership	- Mon – Fri between 6.30 – 5.30pm and 20.00pm – 22.30pm and anytime at weekends
Junior Membership	- Mon – Thurs between 15.30 – 17.30 – Fri Sat and Sun 14.00 – 16.00. Fri 17.30 – 22.30*** Sat and Sun 07.00 – 22.00***

## Price Comparison

Option 1	Option 2

## Memberships

### isospa Memberships Include:

#### Type

Full Membership Plus (monthly)	£39.50
Full Membership Plus (annually)	£434.50
(Includes Fitness Suite, Swimming Pool, Workout Classes and health Suite and Racket Sports****)	
Full Membership (monthly)	£34.50*
Full Membership (annually)	£379.50
(Includes Fitness Suite, Swimming Pool, Workout Classes and health Suite*)	
Off Peak Single (monthly)	£29.50
Off Peak Single (annually)	£324.50
(Includes Fitness Suite, Swimming Pool, Workout Classes)	
20/20 Membership 16-19yr olds (monthly)	£20.00
20/20 Membership 16-19yr olds (annually)	£220.00
(Includes Fitness Suite, Swimming Pool, Workout Classes within the usage times)	
Junior Membership 11 - 15 yr olds	£14.99
Junior Membership 11 - 15yr olds	£164.89
(Includes Fitness Suite, Swimming Pool)	
Family Membership (monthly)	£79.00
Family Membership (annually)	£869.00
(Includes Fitness Suite, Swimming Pool, Workout Classes** and health Suite*)	

- Joint Memberships are available, please speak to a Customer Advisor for more details
- All Annual Memberships include 1 month free
- Advanced memberships are worked out at 12 months for the price of 11 months
- Family membership based on 2 adults 2 kids
- Concessionary Memberships are available, please speak to a Customer Advisor for more details

\*Only applicable at Harborough

\*\*Specific to certain class availability for ages

\*\*\* Only with responsible adult user present

\*\*\*\* Only one court for one hour bookable per day.

### H2O Memberships Include:

Single Membership (monthly) (Includes Swimming Pool)	£18.20
Single Membership (annually)	£200.20
Junior/Concession Membership (monthly) (Includes Swimming Pool)	£12.30
Junior/Concession Membership (annually)	£135.50
Family Membership (monthly) (Includes Swimming Pool)	£49.00
Family Membership (annually)	£539.00